

LYRE LE TEMPS

TECHNICAL & HOSPITALITY RIDER 2026



CONTACTS

• Tour management	Baptiste Ory	+33 (0)6 17 95 32 28.	baptiste.ory@gmail.com
• FOH	Laurent Signolet	+33 (0)6 88 18 29 37	ptilo@d8k.com
• Lights	Nico Colle	+33 (0)6 63 38 12 14	colle.nico@hotmail.fr
• Management	Ludo Schmitt	+33 (0)6 51 97 42 07	lyretour@gmail.com

This rider must be considered an integral part of the contract. The requests listed here are designed to ensure the smooth running of the show. Adjustments may be discussed with Lyre Le Temps' tour manager. Please read the technical sheet carefully and communicate any questions or constraints well before the show date. Thank you!

THE BAND

The team you will be welcoming consists of ten (10) people:

- Ludo (Lead vocals)
- Quentin (DJ, vocals)
- Marco (Basse, Double bass, Vocals)
- Hippolyte (Trumpet / flute)
- Noé (Saxophone)
- François (Trombone / Suba)
- Sam (Drum, vocals)
- Laurent (FOH)
- Nico (light)
- Baptiste (Tour and stage manager)

Please note that an additional person (production, promo, or extra tech) may occasionally join the team. This will be confirmed in advance with our tour manager. If so, accommodation, meals, and hospitality should be provided accordingly.

TRANSPORT

The team usually travels with two vehicles (one van and one minibus), both around 2.0m high, departing from Strasbourg, France. Please ensure easy access and two parking spaces near the stage area for loading/unloading, on dry and covered ground. Two secure parking spots should also be provided at the hotel.

In case of air or train travel, the organizer must provide transfers between the airport/train station, the concert venue, and the hotel, as well as return transfers after the show.

SECURITY

The organizer is fully responsible for the safety of the audience, the Lyre Le Temps team, all equipment, personal belongings, and vehicles from arrival until departure.

ACCOMODATION

The organizer will book a minimum 3-star hotel near the concert venue with 10 single rooms.

Breakfasts for 10 people will be provided at the hotel, at the organizer's expense.

When booking, the organizer must ensure that parking is available for our minibus and van, and that the parking area is secure and/or enclosed.

DRESSING ROOM

The organizer will provide a comfortable dressing room able to accommodate approximately 12 people, as quiet as possible while remaining close to the stage, and reserved exclusively for the Lyre le Temps team. Please ensure it is clean, well-ventilated, furnished with sofas and chairs, equipped with sufficient electrical outlets, and has internet access.

We would also like the dressing room to include a mirror, ashtrays, a microwave, a kettle, a dozen glasses, a knife, a bottle opener, a trash bin (with recycling if possible), as well as adjacent or nearby restrooms reserved for our team.

The dressing room must be lockable, and the key should be given to our stage manager upon arrival. If a key is not available, access must be monitored by security from the team's arrival until departure.

Please also prepare the following for the dressing rooms:

- 30 cold beers (preferably local) and, if possible, some artisan dry cider
- 2 bottles of wine of your choice (usually 1 white and 1 red), preferably local and organic
- 1 pack of 4 Red Bulls NO sugar
- 1 bottle of Hennessy cognac
- bottle of aged agricole rum (La Mauny, Trois Rivières, Clément, or equivalent)
- Some bottles of Coca-Cola, lemonade, Dr Pepper, etc.
- Fruit juices (PAGO brand): strawberry, pulp-free orange, guava, apple, grape
- Coffee (Nespresso type), tea, and herbal infusions
- Still and sparkling water
- Seasonal fruits, preferably local and organic, plus yellow and green lemons
- Ice (only if requested)
- Assortment of hummus, cheeses, guacamole, bread, dried fruits, chips, and other snacks
- Sweets, chocolate, and assorted candies

Any original ideas or opportunities to discover local specialties will be appreciated! Please prioritize organic, local, artisanal, and seasonal products.

MEALS

Please provide 10 meals on the evening of the concert, at least 1 hour before the start of the set, with the possibility to have dinner after the set regardless of the band's performance time. Meals should include starter, main course, cheese, dessert, and drinks.

If the band is required to be present during the day, the organizer will also provide lunch in addition to the evening meal.

SPECIAL DIETS: Please ensure

1 meal **No raw carrots or chocolate**
1 meal **No fish or seafood**

PASS / INVITATIONS

Please provide 10 "AAA" passes available upon the team's arrival. Additionally, please provide up to 20 guest invitations for the band. If needed, a guest list will be provided prior to the concert date.

MERCHANDISING

The organizer agrees to allow the artists or their representative the exclusive right to sell merchandise directly related to the band, and to provide a sufficient space with tables, barriers, lighting, and power, within the concert venue.

PROMOTION

Our team is available for any special requests or questions regarding promotion. Any recording, audio, video, or specific promotional activity will be subject to a separate agreement with the management of Lyre le Temps.

TECHNICAL REQUIREMENTS

LOAD-IN & SOUNDCHECK: 02:00

LINE CHECK: 30 MIN

Out of respect for both the audience and the artists, the organizer shall ensure that the performance schedule, as previously agreed upon with the stage manager, is strictly followed. We require **45 minutes for setup** and **1 hour 15 minutes for soundcheck**, totaling **2 hours**.

For festival slots, **changeovers can be completed in 30 minutes**, including line check. In the event of a line check, a **30-minute pre-setup period** must be scheduled prior to the changeover. This must take place in a dedicated wing space or backline area located on the same level as the stage. Finally, following the performance, please allow approximately **30 minutes for load-out** and **15 minutes for loading**.

Please provide **two stagehands** to assist with setup, load-out, and loading.

The organizer agrees to provide the following information by email as soon as possible:

- Access maps for the venue and accommodation
- Stage plan and dimensions (including clearance)
- Full technical specs for sound and lights
- Contact details for local production and technical staff
- Complete schedule including setup, soundcheck, and running order

All stage, sound, and lighting systems must be installed and patched before the band's arrival. Qualified local sound, light, and stage technicians must be present during setup, soundcheck, and performance.

Please provide 8 towels for the stage, along with approximately a dozen small bottles of still and sparkling spring water, preferably at room temperature. Alternatives to plastic bottles are also welcome.

On the technical side, we request the following:

1. STAGE

The organizer must provide a solid, flat, and stable stage capable of supporting 500 kg/m². Minimum dimensions: width 8m, depth 6m, clearance 4m, height 1–1.6m. The floor should preferably be black and skirted, with safety railings as needed.

The organizer will provide:

- Stage left: 1 Riser, 1x2m, 0.8m high
- Stage right: 1 riser, 2x2m, 0.6m high, black skirted, for our drummer
- Upstage: 1 riser, 3x2m, 0.4m high, black skirted, for the brass section

Please note that these platforms are absolutely essential, as they support the artists' equipment and are key scenic elements for the smooth running of the Lyre le Temps show. In addition, the orientation of the risers, as specified in our technical sheet, is important.

For safety reasons and to ensure smooth changeovers, all risers must be equipped with heavy-duty casters featuring locking brakes.

Each platform must be securely clamped (locked) together to ensure full stability during the performance.

Please provide a dedicated storage area on Stage Left.

2. POWER

The organizer agrees to provide an electrical setup capable of handling the total power requirements of all equipment used by the band. The installation must comply with safety standards and be checked by a qualified technician, who will remain available throughout the soundcheck and performance.

All electrical connections for sound, lighting, and the band's backline must be fully operational upon the arrival of the Lyre le Temps team. For stage power points, please refer to the attached stage plot.

3. SOUND

FOH

The FOH desk must be located within the audience area and perfectly centered relative to the stage's center axis. It must **not** be placed against a wall, under a balcony, or in an enclosed room.

We travel with our own console: **Behringer Wing** (95cm x 70cm x 30cm – Weight: ~25kg).

Power: 1x dedicated **16A single-phase** power supply at the FOH position.

Outputs: We provide the **Left-Right signal via AES** at FOH.

Please provide a stable surface/table and sufficient space for the console and an effects rack. The FOH area should ideally be **elevated 40 cm** above floor level.

Please provide **two (2) Cat5e or Cat6 cables** (max 80m, or **Cat5e STP** for 100m).

- These cables are for our **exclusive use**.
- They will link the FOH console to our stage rack located **Upstage Left**, behind the drum kit.

MONITORS

We provide a 16U rack on casters located Upstage Left behind the drum riser. This rack contains our stage racks and In-Ear Monitor (IEM) transmitters.

Side Fills: One (1) pair of professional side fills is required, suited to the stage size. **Important:** High-frequency drivers must be positioned at a minimum height of **2 meters**.

Wedges: Three (3) floor monitors (wedges) are required for the horn section.

MICROPHONES

We need :

6x Shure AD4D receiver channels:

- **4x AD1** bodypack transmitters.
- **2x AD2** handheld transmitters with **SM58 capsules**.

STAND:

We need :

- 4x Large boom stands.
- 1x Short boom stand.
- 1x Large round-base stand.

STAGE & PATCH

All lines will be connected to our **S32 stage rack** located behind the drum riser. Any lines highlighted in **red** on the provided patch sheet must be supplied by the local promoter/venue.

Please provide a 2-way wired or wireless intercom system between the FOH position and Stage Left (Stage Manager position) for show cues

Backline Power: Please provide two (2) **220V / 16A** power drops: one at **Stage Left (Cour)** and one at **Stage Right (Jardin)**.

4. LIGHTING

On stage, we bring:

- 4 DMX-controllable lamp posts
- 5 ColorStrike M
- 10 Rush MH2

We bring our Command wing GM2.

The organizer will provide:

Suitable stage lighting.

All equipment must be installed according to the attached lighting plot, patched, and fully tested before the arrival of the LYRE LE TEMPS crew.

Floor power:

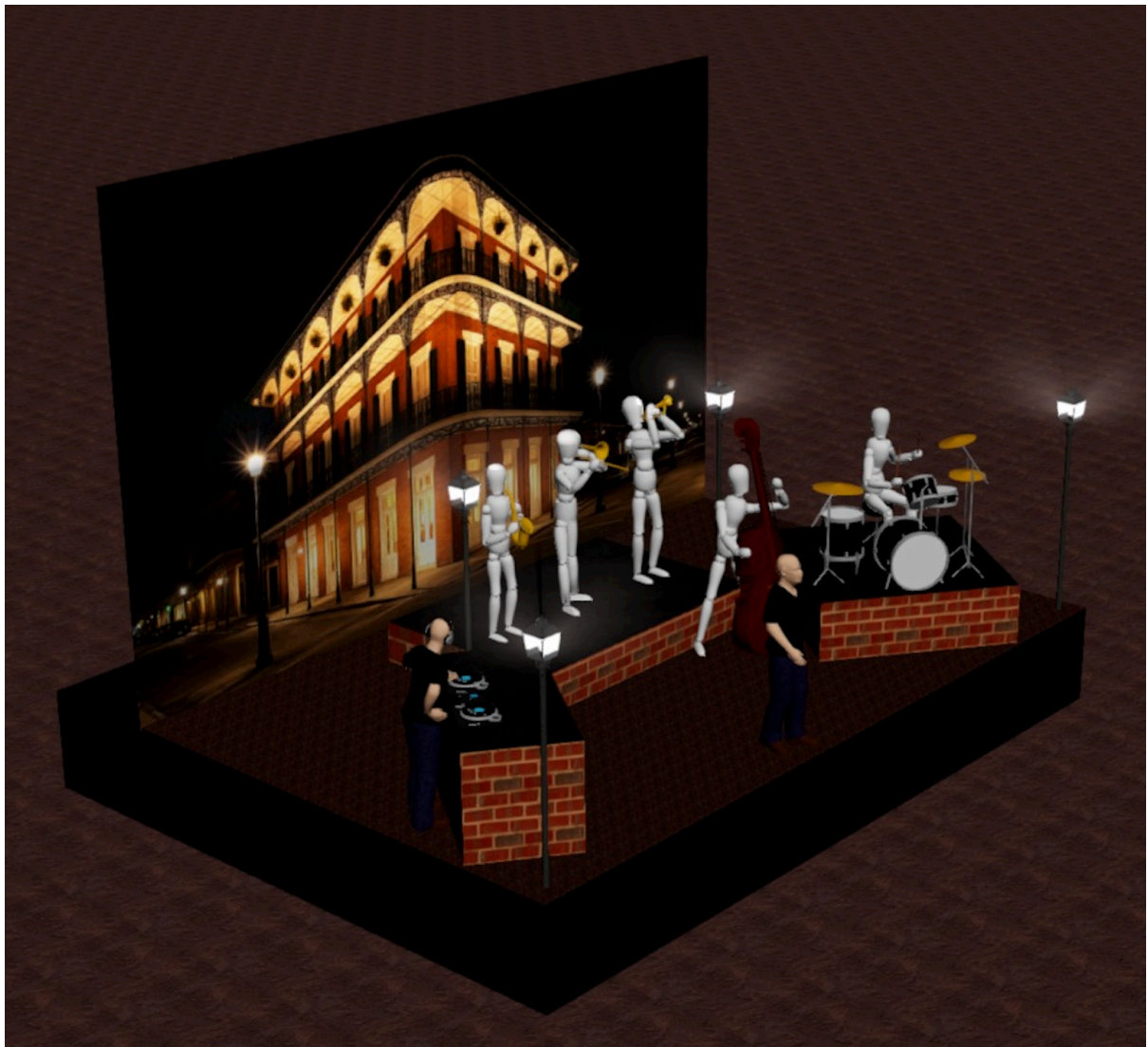
- 2 × 16A direct power outlets, stage left, underneath the DJ riser.

5. BACKLINE

If travel involves train or plane, it is the organizer's responsibility to provide the full backline required by the band. A detailed list will be provided in advance by the band's stage manager.

LYRE LE TEMPS

Stage plot 2026



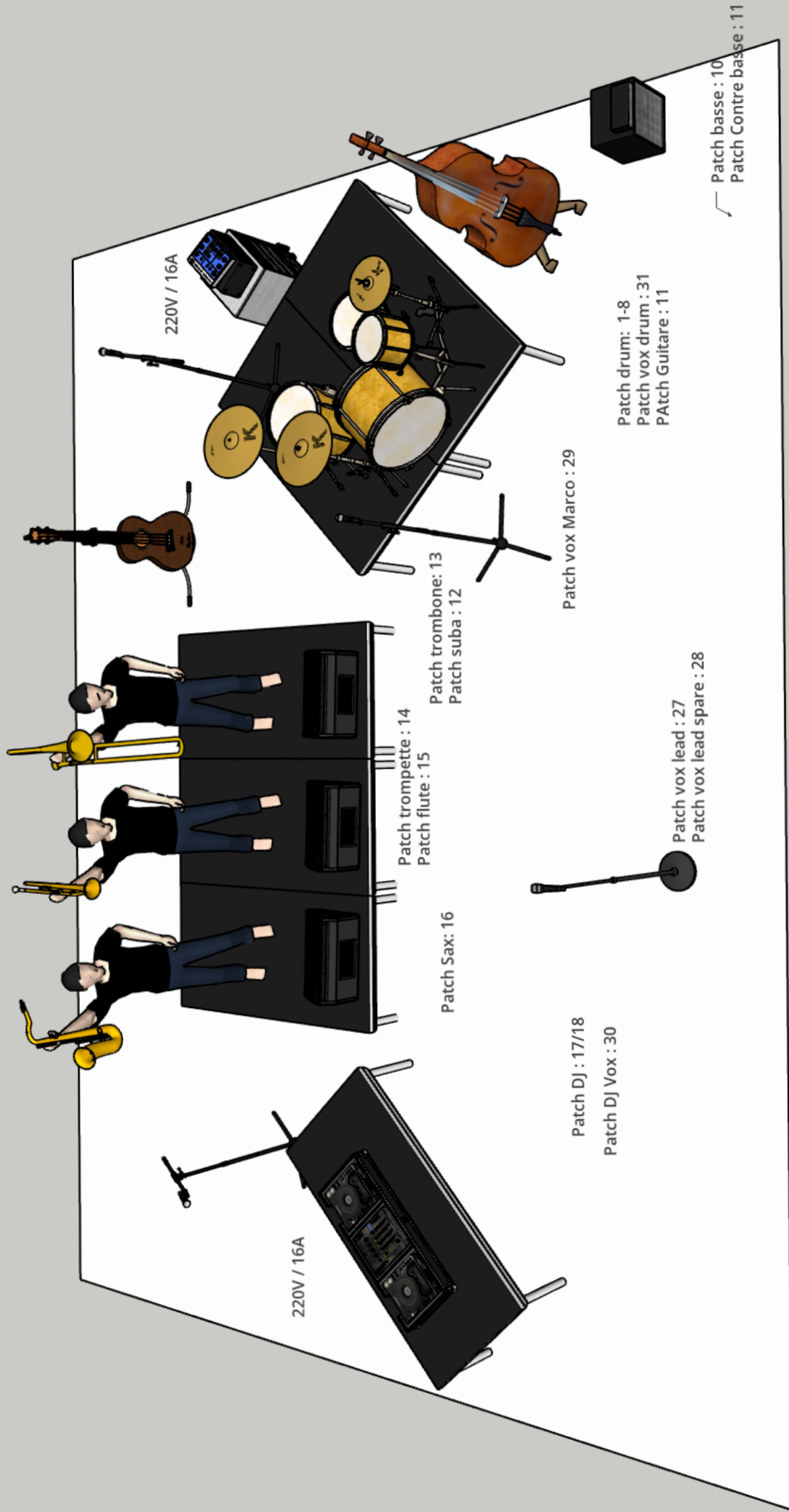
Who? S16	N°	Instrument	DI / Mic		Stand	VCA
Sam	1	Kick	D6 inclus	XLR included	Clip included	VCA 1
Sam	2	Snare top	SM 57 inclus	XLR included	Clip included	VCA 1
Sam	3	Snare bottom	SM 57inclus	XLR included	Clip included	VCA 1
Sam	4	HH	SM81 / KSM 137	XLR included	Small boom stand	VCA 1
Sam	5	Rack tom	E604 inclus	XLR included	Clip included	VCA 1
Sam	6	Floor tom	Beta 52 inclus	XLR included	Clip included	VCA 1
Sam	7	OH L	Oktava inclus	XLR included	Clip included	VCA 1
Sam	8	OH R	Okatva Inclus	XLR included	Clip included	VCA 1
Marco	9	Bass DI	DI	XLR included	-	VCA 2
Marco	10	Double bass	-	XLR included	-	VCA 2
Sam	11	Guitar	DI	XLR included	-	VCA 2
François	12	Susa	SM 57	XLR	-	
François	13	Trombone	DPA 4099	AD1 + adaptateur DPA	Clip-on trombone	
Hippolyte	14	Trumpet	DPA 4099	AD1 + adaptateur DPA	Clip-on trumpet	
Hippolyte	15	Flute	DPA 4099	AD1 + adaptateur DPA	Clip-on flute	
Noé	16	Sax	DPA 4099	AD1 + adaptateur DPA	Clip-on sax	
Dj Q	17	Scratch L	XLR Inklus	XLR included		VCA 5
Dj Q	18	Scratch R	XLR inclus	XLR included		VCA 5
Dj Q	19	E kick	Mac mini	Firewire		VCA 6
Dj Q	20	E snare	Mac mini	Firewire		VCA 6
Dj Q	21	Beat	Mac mini	Firewire		VCA 6
Dj Q	22	E basse	Mac mini	Firewire		VCA 6
Dj Q	23	Instru L	Mac mini	Firewire		VCA 6
Dj Q	24	Instru R	Mac mini	Firewire		VCA 6
Dj Q	25	Spare L	Mac mini	Firewire		VCA 6
Dj Q	26	Spare R	Mac mini	Firewire		VCA 6
Ry'm	27	Ry'm	SM58 (HF)	AD2	Tall round-base stand	VCA 7
Ry'm	28	Ry'm (spare)	SM58 (HF)	AD2		VCA 7
Marco	29	Marco back	SM58	XLR included	Tall boom stand	VCA 8
Dj Q	30	Dj Q back	SM58	XLR included	Tall boom stand	VCA 8
Sam	31	Sam back	Beta 56 A included	XLR included	Tall boom stand	VCA 8

AUX

RED = REQUESTED

S16 X 32 out

S16/1						
Sam	1	IEM	Included			
Marco	3	IEM	Included			
Dj Q	5	IEM	Included			
Ry'm	7	IEM	Included			
S16/2						
Side L	1	Wedge				
Side R	2	Wedge				
Sax	3	Wedge				
Trompette	4	Wedge			On stand	
Trombone	5	Wedge			On stand	



LYRE LE TEMPS

MAJ 2026

A FOURNIR

Légende

Symbole	Nom	Compte
	LYRE SPOT	6
	LYRE WASH	6
	LIGHT PUB	4
	PAR LED RGBW	4
	PC TRAD OU PAR LED ZOOM	3
	STROB	1
	PAR 640U PAR LED ZOOM	4

1 x Machine à brouillard + ventilo
2 x arrivées ELEC 240v 3000w

NOUS FOURNISSONS / AVEC CABLAGES

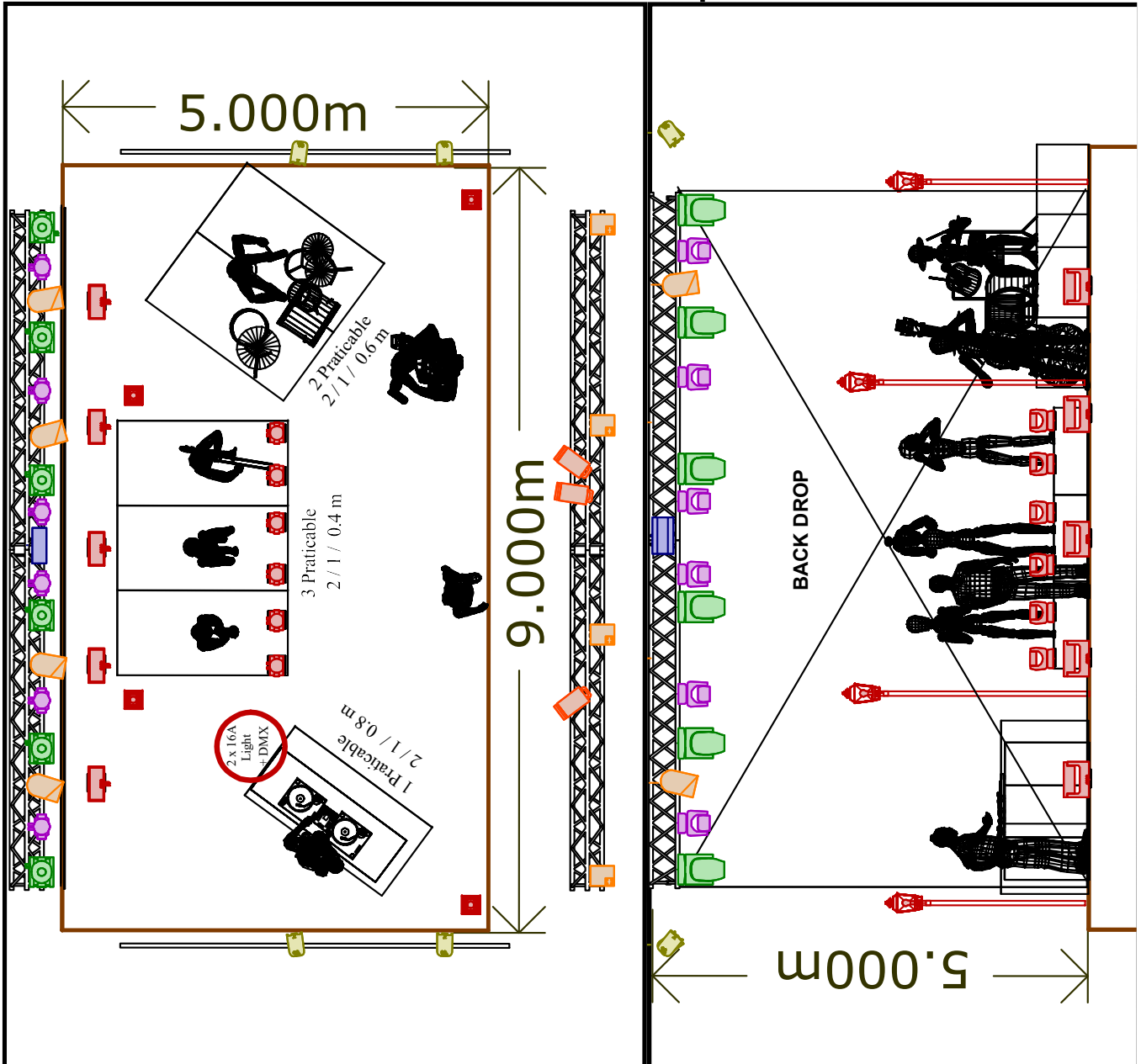
1 x BACK DROP
1 x COMANDE WING GMA2

Symbole	Nom	Compte
	Bulb Strip w/ 1 bulb	4
	Color Strike M	5
	Rush MH2	10

NICO COLLE:

06.63.38.12.14

colle.nicolas@gmail.com



Prüfinstitut Hoch

Lerchenweg 1
D-97650 Fladungen
Tel.: 09778-7480-200
hoch.fladungen@t-online.de

www.brandverhalten.de



Prüfinstitut für das Brandverhalten von Bauprodukten, Dipl.-Ing. (FH) Andreas Hoch
Bauaufsichtlich anerkannte Prüf-, Überwachungs- und Zertifizierungsstelle

PRÜFZEUGNIS PZ-Hoch-170149



zum Nachweis des Brandverhaltens nach DIN 4102, Teil 1

Antragsteller	Georg+Otto Friedrich GmbH Waldstraße 73 D-64846 Groß-Zimmern
Art des Prüfmaterials	weißes Polyestergewirke -Gewirke 1: Flächengewicht ca. 126 g/m ² -Gewirke 2: Flächengewicht ca. 337 g/m ²
Bezeichnung des Prüfmaterials	„PES-Dekotex mit INKTeX+® FL Ausrüstung“
Probenahme	durch den Antragsteller
Inhalt des Antrags	Prüfung auf Entflammbarkeit zur Einreihung in die Baustoffklasse B1 "schwerentflammbar" nach DIN 4102, Teil 1
Geltungsdauer des Prüfzeugnisses	31.01.2028
Ergebnis	Das geprüfte Produkt erfüllt <ul style="list-style-type: none">• mit einem Flächengewicht von ca. 126 g/m² bis ca. 337 g/m²• freihängend oder im Abstand größer 40 mm zu gleichen oder anderen flächigen Baustoffen, die Anforderungen der Baustoffklasse B1 für schwerentflammbare Baustoffe nach DIN 4102, Teil 1 (Mai 1998).

Das Prüfzeugnis umfasst 5 Seiten und 6 Anlagen.

Hinweis: Falls der o.g. Baustoff nicht als Bauprodukt gemäß MBO § 2, Abs. 9, Ziffer 1, verwendet wird, ist ein allgemeines bauaufsichtliches Prüfzeugnis nicht erforderlich.

Dieses Prüfzeugnis gilt nicht, wenn der geprüfte Baustoff als Bauprodukt im Sinne der Landesbauordnungen verwendet wird (MBO § 17, Abs. 3).

Dieses Prüfzeugnis ersetzt nicht einen gegebenenfalls notwendigen baurechtlichen / bauaufsichtlichen Verwendbarkeitsnachweis nach Landesbauordnung. Dieser ist zu führen durch:

- eine allgemeine bauaufsichtliche Zulassung oder durch
- ein allgemeines bauaufsichtliches Prüfzeugnis oder durch
- eine Zustimmung im Einzelfall

Im bauaufsichtlichen Verfahren kann dieses Prüfzeugnis als Grundlage dienen

- bei geregelten Bauprodukten für die vorgeschriebenen Übereinstimmungsnachweise
- bei nicht geregelten Bauprodukten für die erforderlichen Verwendbarkeitsnachweise.

Das Prüfzeugnis darf ohne vorherige Zustimmung der Prüfstelle nur innerhalb des Geltungszeitraumes und nur nach Form und Inhalt unverändert veröffentlicht oder vervielfältigt werden.

POS-04-FB05 Rev04
Mitglied der eg if
notified body no.: 1508

Durch die DAkkS nach DIN EN ISO/IEC 17025 akkreditiertes Prüflaboratorium.
Die Akkreditierung gilt für die in der Urkunde aufgeführten Prüfverfahren

